

APPLICATION:

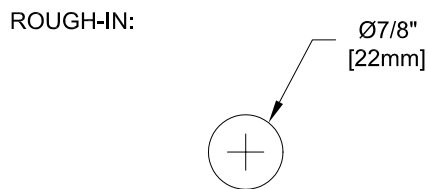
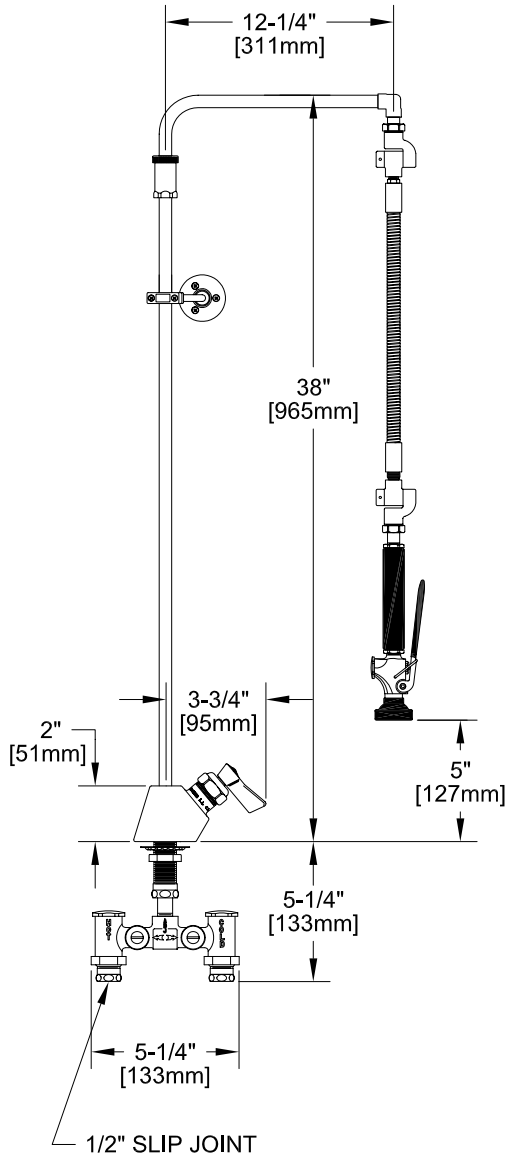
JOB NAME:

QUANTITY: ITEM NO.

PRODUCT NAME:
PRE-RINSE, ULTRA STYLE,
SINGLE DECK MOUNT

SPECIAL CONFIGURATION
CHECK BASE MODEL AND OPTIONS

MODEL:
 2020 ULTRA SPRAY VALVE, NO WALL BRACKET
 2020-WB ULTRA SPRAY VALVE, WALL BRACKET



OPTIONS OR MODIFICATIONS:

SUPPLY LINES (24" OR 36") CIRCLE LENGTH

ADD-ON FAUCET (6", 8", 10", 12", 14", 16") CIRCLE

IN-LINE DUAL CHECK VALVE

PIPE HOOK

BRUSH

VANDAL RESISTANT KIT

HANDLES (CROSS OR WRIST) CIRCLE STYLE

OTHER _____

FEATURES

CONTROL VALVE

- * SINGLE DECK MOUNT
- * TEMPERATURE CONTROL VALVE WITH INTERNAL SPRING LOADED CHECK VALVES
- * STEM - LEFT HAND
- * SWIVELLING SEAT DISKS
- * HOT AND COLD INDEX BUTTONS
- * STAINLESS STEEL SEATS
- * STAINLESS STEEL SEAT SCREWS
- * STAINLESS STEEL HANDLE SCREWS

HOSE

- * 15-1/2" LENGTH
- * STAINLESS STEEL END FITTINGS
- * STAINLESS STEEL EXTERNAL JACKET
- * 3 PLY FIBER REINFORCED INTERNAL RUBBER HOSE
- * REPAIRABLE IN FIELD WITH SIMPLE TOOLS

ULTRA SPRAY VALVE

- * 1.6 GPM @ 80 PSI ENERGY EFFICIENT NOZZLE
- * BRONZE HANDLE - NOT PLASTIC - MEANS FULL "ON"
- * FITS ALL BRANDS

SYSTEM LIMITS

- * TEMP: 40°F MIN. TO 140°F MAX.
- * PRESSURE: 200 PSI MAX. STATIC

SHIPPING WEIGHT

- * 12.0 LBS